



TOWNSVILLE WORLD TRIATHLON MULTISPORT FINAL

The Course and Event Schedule

Please visit the official race website for further information <https://townsville.com.au/triathlon/schedule/>

Friday 16 August	Duathlon Sprint (Jezzine Barracks)
Sunday 18 August	Duathlon Standard (Jezzine Barracks)
Tuesday 20 August	Cross Triathlon (Pallarenda Park)
Thursday 22 August	Cross Duathlon (Pallarenda Park)
Friday 23 August	Aquathlon (Jezzine Barracks)
Sunday 25 August	Long Distance Triathlon & Aquabike (Jezzine Barracks)

*Schedule is subject to change

About Townsville

Boasting more than 300 days of sunshine each year, Townsville North Queensland is just the place to ignite your sense of wonder. From exploring romantic villages nestled amongst the rainforest to discovering the magic of the Great Barrier Reef, as well as the awe of the Outback, Townsville North Queensland has something for everyone.

If you like to get the most from your holiday and enjoy being active while travelling, look no further than Townsville North Queensland. Take a walk-up Castle Hill and enjoy the amazing panoramic views, have a truly magical underwater encounter while diving the SS Yongala, one of the world's best wreck dives, explore the region's many mountain bike trails or head out and enjoy a day of water sports at Magnetic Island's Horseshoe Bay. Walk, ride or scoot your way along The Strand or play at the waterpark with the kids.

Between waterfalls, reefs, islands, beaches and outback adventures, Townsville North Queensland is a nature lover's paradise. Start your adventure in the heart of Townsville's city with a stroll along The Strand, voted by TripAdvisor as one of Australia's Top Ten Beaches.

Only 20 minutes across the water you'll find Magnetic Island, home to Northern Australia's largest colony of koalas living in the wild. Magnetic by name and magnetic by nature, the Island promises 23 bays and beaches to explore, stunning fringing coral reefs and is a haven for native wildlife, with two thirds of the Island classified National Park.

Are you dreaming of chasing waterfalls? Just 40 minutes north of Townsville you'll find Paluma Range National Park. Explore waterfalls, swimming holes, rockslides and more, and keep an eye out for platypus and native birds who call this Heritage-listed Wet Tropics Rainforest home.

Registrations are now open until Sunday 21 April 2024, unless sold prior. Registration enables us to arrange the accommodation and everyone participating on the trip (including partners) do need to register. You can also indicate interest in extending your stay. If you are wishing to stay a little longer please advise us in the "Stay and Play" section of the registration. Program details, inclusions and costs are current and subject to change. If you have questions, please see the FAQ section.

The friendly Tri Travel team at HOT Events are here to help you, please do not hesitate to contact us with any queries on registering for the Official New Zealand Triathlon team tour.



Official Tri Travel 12 Night Land Only Package - Wednesday 14 - Sunday 26 August 2024

Oaks Townsville Gateway Suites

Hotel Room: NZ\$1,599.00 per person (based on twin share). Single Room \$2,991.00
One Bedroom Apartment: NZ\$1,859.00 per person (based on twin share). Single Room \$3,511.00
Third person using a rollaway NZ\$865.00 per person (max 1 extra person)

Aquarius on the Beach

Queen Room: NZ\$1,647.00 per person (based on twin share). Single Room \$3,099.00
Third person using a double sofa bed or extra bed NZ\$562.00 per person. Extra bed not suitable for adults

Package Inclusions

- 🕒 12 nights' accommodation at Oaks Gateway OR Aquarius on the Beach
- 🕒 Approved bike storage in your hotel room
- 🕒 Team Function - Monday 19 August
- 🕒 HOT Events staff member onsite for a period of the stay
- 🕒 Dedicated HOT Events professional who will work with you on your travel arrangements

Travel Amendments

We understand that you might want to amend your travel dates to best suit the dates of your event or events. Tri NZ Travel can tailor-make a package for you to suit your travel needs.

Room sharing options will be limited if stays are shortened. Minimum stay of 4 nights will apply

We would suggest the following dates to fit around events:

14/20 August - 6 nights for Duathlon Sprint/Standard

14/23 August - 9 nights for Cross Duathlon/Triathlon

20/26 August - 6 nights for the LD Triathlon, Aquabike and Aquathlon

Additional charges (at traveller's own cost)

- 🕒 Flights if required, airfare options are available on request
- 🕒 Additional airline luggage charges or freighting of bikes / luggage
- 🕒 Single supplement (if you are choosing to have a room by yourself)
- 🕒 Visas (if required)
- 🕒 Travel Insurance
- 🕒 Rental cars or transportation
- 🕒 Meals
- 🕒 Tips/Gratuities (a guideline will be provided)
- 🕒 Costs related to any damage incurred to suppliers by athletes and supporters

All prices are:

- 🕒 Per person in NZ dollars
- 🕒 Prices are subject to change, due to foreign exchange fluctuations and governmental taxes
- 🕒 Based on twin/double share and single room accommodation (prices above)

Package Payment Terms

- 🕒 Non-refundable booking deposit of NZ\$500.00 per person is required within 3 days of House of Travel Christchurch City / HOT Events sending a booking confirmation to confirm your booking



- 🕒 The balance of payment will be required by Friday 31 May 2024
- 🕒 HOT Events accepts payment by cheque, cash or credit card as well as Q card and GEM card
- 🕒 Payment by credit card does attract fees depending on the credit card type used
- 🕒 Cancellation penalties over and above the deposit will apply once you have paid in full

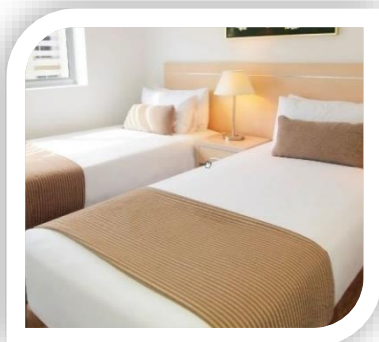
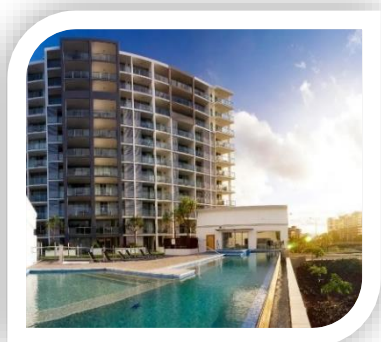
Garth Barfoot Aquabike Overall Prizewinners - please contact Tri Travel prior to booking your package - the prize offer is property specific for 12 nights and any variations will be at your own expense.

Official New Zealand Hotels

Oaks Townsville Gateway Suites

Oaks Townsville Gateway Suites stands among the very best serviced apartments in Townsville, boasting contemporary hotel rooms and self-contained apartments on Palmer Street, offering close proximity to restaurants, bars and leisure activities. Stunning views of the river and city can be witnessed from your balcony or our spectacular elevated infinity-edge swimming pool.

Property features	Room Features
<ul style="list-style-type: none"> 🕒 lap pool (7am-8pm) 🕒 fitness room 🕒 parking 🕒 wifi 🕒 guest laundry 🕒 Charge back from nearby restaurants available (5% service charge applies) Oaks Metropole pub, Ribs & Rumps, Masala, Coffee Club, Cowboys League & Strand 	<ul style="list-style-type: none"> 🕒 hair dryer 🕒 iron/ ironing board 🕒 full kitchen facilities (not hotel room) 🕒 laundry facilities (not hotel room) 🕒 air conditioning 🕒 satellite/cable TV 🕒 free wifi/wireless 🕒 tea/coffee making facilities 🕒 balcony with outdoor furniture 🕒 fridge



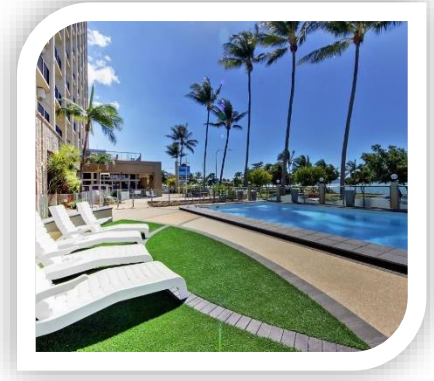
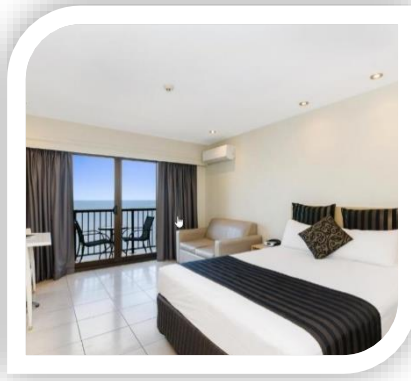


Aquarius on the Beach

Aquarius on the Beach Townsville is located on the Strand, Townsville’s world-class beachfront promenade and most desirable location.

Located in the heart of the Strand, Townsville’s 2km palm tree studded beachfront, guests can take advantage of the free water park and rock pool, dine at one of the many cafes or restaurants, fish off the jetty, or simply laze on the beach and enjoy the stunning views to Magnetic Island.

Property features	Room Features
<ul style="list-style-type: none"> 🕒 swimming pool 🕒 off street parking 🕒 wifi 	<ul style="list-style-type: none"> 🕒 Queen Bed only 🕒 hair dryer 🕒 iron/ ironing board 🕒 kitchenette (microwave & fridge) 🕒 air conditioning 🕒 satellite/cable TV 🕒 tea/coffee making facilities



Transport options for arrival on 14 August and departure on 26 August will be suggested once HOT Events/Tri Travel have an indication of the number of people travelling and their arrival point (Cairns/Townsville). This may include bike transport as well. Transport on other dates may be an option, but will be based on demand. Additional costs will apply



New Zealand team accommodation

HOT Events recognise that athletes travelling to race have different requirements in terms of budget, hotel standard, hotel facilities and room configurations. We have chosen this hotel as the official hotel based on its great location; as well as the great value offered as a room rate.

All accommodation is classified as follows: single use (one person/one bed), twin share (two people, two beds) or double share (two people/one bed).

Space at the team hotel will be limited so we strongly advise booking early. Bookings will be on a first in, first served basis.

Shared Rooms

Share accommodation is based on twin rooms only (maximum 2 adults per room).

If athletes are travelling alone and wish to share with someone, HOT Events will assist with matching up with other athletes of similar age/gender as best as possible.

Shared rooms will be subject to finding another athlete who is staying the same dates and the same property. This is not guaranteed and should no other athlete require the same dates or hotel, the athlete who has requested accommodation will be required to pay the total cost of the room (single supplement).

Please keep mind that we will initially confirm the twin share price and any additional payment would be due when the balance is due by 31 May 2024 if a room sharer cannot be found.

NOTE AQUARIUS ON THE BEACH IS NOT A SUITABLE OPTION FOR SHARING ATHLETES TOGETHER AS IT IS ONLY QUEEN BEDS

STAY AND PLAY

Want to extend your stay or have the family join you afterwards? Then let us know so we can arrange the perfect break away for you and your loved ones. If you do wish to amend your travel arrangements, please indicate this on the registration form (in the Stay and Play section) and HOT Events will be in touch with you regarding your requirements.

Important notes:

All costs associated with extensions are at your own expense and must be paid at time of booking

- 🕒 Due to the high demand for flights, we do recommend that you request your extension travel as soon as possible as part of the online registration
- 🕒 Prices for extension packages are subject to change based on exchange rates and taxes
- 🕒 All options are subject to availability at time of booking

If you have any questions please read the FAQ's